

Diabetes can affect other areas of your health

Some diabetes patients develop peripheral arterial disease (PAD), a condition where plaque builds up in the arteries and reduces blood flow to the legs and feet, causing circulation and nerve problems. This reduced blood flow can make it harder for your body to fight infection, which can lead to a foot ulcer.

A diabetic foot ulcer is a serious condition that not only impacts your foot, but also your overall health. Because not everyone responds well to current foot ulcer treatments, doctors are working to research and develop new investigational medications that may help people with foot ulcers in the future.

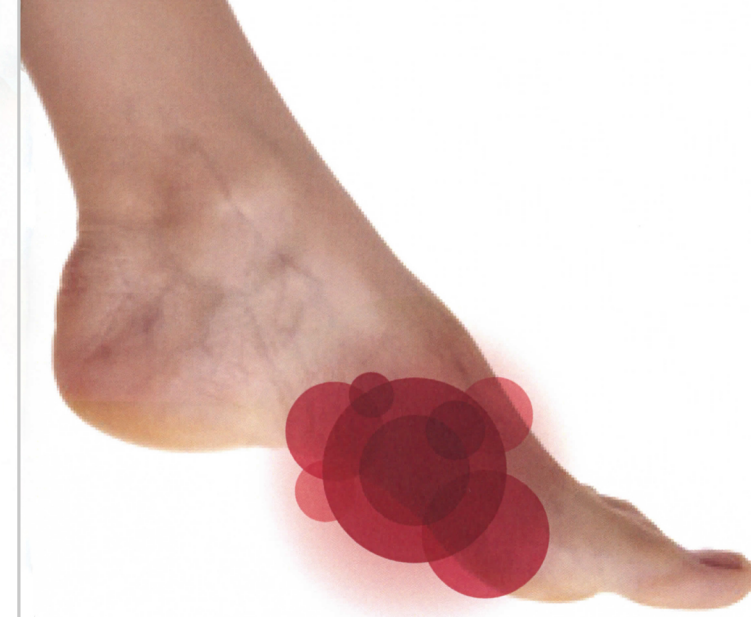
Did you know?

About 15% of people with diabetes will get a diabetic foot ulcer.



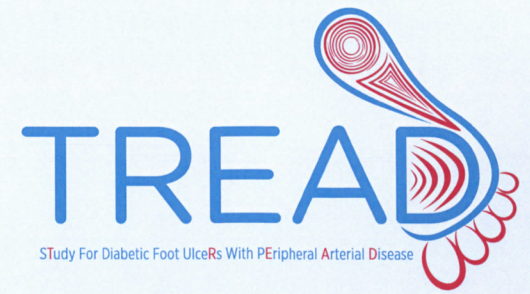
**This study is enrolling now.
Call us to see if you may qualify.**

Dr. C. James Anderson
4600 Memorial Drive, Belleville, IL
314-376-9571



We're taking a new **RESEARCH** approach for **DIABETIC FOOT ULCERS**

If you have diabetes and have been diagnosed with a diabetic foot ulcer as a result of peripheral arterial disease, learn more about this clinical research study of an investigational drug.



Doctors are studying an investigational medication

Local doctors are looking for people with a diabetic foot ulcer and peripheral arterial disease to volunteer for a clinical research study of an investigational medication to determine if it improves blood vessel development and circulation in areas affected by PAD. (“Investigational” means it’s not approved or available for use by the public.)

If you qualify for this study, you’ll receive the following at no cost:

- Study medication
- Study-related care from a local doctor
- Reimbursement for your time and travel

Health insurance and referrals aren’t required to participate.

Clinical research is important and confidential

A clinical research study is a research project done with human volunteers to learn more about new investigational drugs. Some volunteers are interested in access to investigational drugs. Others volunteer to help advance science. Whatever your reason for participating, we’ll closely monitor your health and protect your privacy.

Important information about this study

To pre-qualify for this trial, you must be:

- At least 18 years of age
- Diagnosed with type1 or type 2 diabetes
- Diagnosed with peripheral arterial disease (PAD) and a diabetic foot ulcer more than 1 month before the trial

Doctors will also evaluate other criteria to make sure you qualify for this study.

Remember to ask questions!

Your study doctor will explain the benefits and risks of being in this research study. Please use this opportunity to ask questions. You may also take this brochure with you and talk to your family doctor to help you decide if this research study is right for you.



How can I get started?

Step 1: Contact our study coordinator

To learn more, contact our study coordinator listed on the back of this brochure. The study coordinator will give you information about the study and help determine if you might qualify.

Step 2: Determine eligibility/ give informed consent

At the doctor’s office, our study staff will explain the study procedures and its possible benefits and risks. They’ll also ask some health questions and may refer you for further medical evaluation to make sure you meet the requirements for the study. To join our study, you must read and sign a document called an informed consent to show that you understand the study and what is required of you.

Step 3: Participate

If eligible, you’ll enter the study for about 2 years — including a treatment period of 7 days — and make about 14 visits to our offices during that time. The staff will work with you to find convenient times for these visits. If for some reason you need to leave the study, you may do so at any time, for any reason.